

## HIGHLIGHTS OF PRESCRIBING INFORMATION

These highlights do not include all the information needed to use **ESLICARBAZEPINE ACETATE TABLETS** safely and effectively. See full prescribing information for **ESLICARBAZEPINE ACETATE TABLETS**.

**ESLICARBAZEPINE ACETATE tablets, for oral use**

**Initial U.S. Approval: 2013**

### -----INDICATIONS AND USAGE-----

Eslicarbazepine acetate tablets are indicated for the treatment of partial-onset seizures in patients 4 years of age and older. (1)

### -----DOSAGE AND ADMINISTRATION-----

- **Adult Patients:** The recommended initial dosage of eslicarbazepine acetate tablets is 400 mg once daily. For some patients, treatment may be initiated at 800 mg once daily if the need for seizure reduction outweighs an increased risk of adverse reactions. Increase the dose in weekly increments of 400 mg to 600 mg once daily, based on clinical response and tolerability, to a recommended maintenance dosage of 800 mg to 1,600 mg once daily. (2.2)
- **Pediatric Patients:** The recommended dosage of eslicarbazepine acetate tablets is based on body weight and is administered orally once daily. Increase the dose in weekly intervals based on clinical response and tolerability, to the recommended maintenance dosage (2.2).
- **Patients with Moderate or Severe Renal Impairment:** Reduce dosage by 50%. (2.4)

### -----DOSAGE FORMS AND STRENGTHS-----

Tablets: 200 mg, 400 mg, 600 mg, 800 mg (3)

### -----CONTRAINDICATIONS-----

Hypersensitivity to eslicarbazepine acetate or oxcarbazepine. (4)

### -----WARNINGS AND PRECAUTIONS-----

- **Suicidal Behavior and Ideation:** Monitor for suicidal thoughts or behavior. (5.1)
- **Serious Dermatologic Reactions, Drug Reaction with Eosinophilia and Systemic Symptoms (DRESS), Anaphylactic Reactions and Angioedema:**

Monitor and discontinue if another cause cannot be established. (5.2, 5.3, 5.4)

- **Hyponatremia:** Monitor sodium levels in patients at risk or patients experiencing hyponatremia symptoms. (5.5)
- **Neurological Adverse Reactions:** Monitor for dizziness, disturbance in gait and coordination, somnolence, fatigue, cognitive dysfunction, and visual changes. Use caution when driving or operating machinery. (5.6)
- **Withdrawal of eslicarbazepine acetate tablets:** Withdraw eslicarbazepine acetate tablets gradually to minimize the risk of increased seizure frequency and status epilepticus. (2.6, 5.7, 8.1)
- **Drug Induced Liver Injury:** Discontinue eslicarbazepine acetate tablets in patients with jaundice or evidence of significant liver injury. (5.8)
- **Hematologic Adverse Reactions:** Consider discontinuing. (5.10)

### -----ADVERSE REACTIONS-----

- Most common adverse reactions in adult patients receiving eslicarbazepine acetate ( $\geq 4\%$  and  $\geq 2\%$  greater than placebo): dizziness, somnolence, nausea, headache, diplopia, vomiting, fatigue, vertigo, ataxia, blurred vision, and tremor. (6.1)
- Adverse reactions in pediatric patients are similar to those seen in adult patients.

**To report SUSPECTED ADVERSE REACTIONS, contact Apotex Corp. at 1-800-706-5575 or FDA at 1-800-FDA-1088 or [www.fda.gov/medwatch](http://www.fda.gov/medwatch).**

### -----DRUG INTERACTIONS-----

- **Carbamazepine:** May need dose adjustment for eslicarbazepine acetate or carbamazepine. (2.3, 5.6, 7.1)
- **Phenytoin:** Higher dosage of eslicarbazepine acetate may be necessary and dose adjustment may be needed for phenytoin. (2.3, 7.1, 7.2)
- **Phenobarbital or Primidone:** Higher dosage of eslicarbazepine acetate may be necessary. (2.3, 7.1)
- **Hormonal Contraceptives:** eslicarbazepine acetate may decrease the effectiveness of hormonal contraceptives. (7.4, 8.3)

### -----USE IN SPECIFIC POPULATIONS-----

**Pregnancy:** Based on animal data, may cause fetal harm. (8.1)

**See 17 for PATIENT COUNSELING INFORMATION and Medication Guide.**

**Revised: 4/2023**

## FULL PRESCRIBING INFORMATION: CONTENTS\*

### 1 INDICATIONS AND USAGE

### 2 DOSAGE AND ADMINISTRATION

- 2.1 Important Administration Instructions
- 2.2 General Dosing Recommendations
- 2.3 Dosage Modifications with Other Antiepileptic Drugs
- 2.4 Dosage Modifications in Patients with Renal Impairment
- 2.5 Patients with Hepatic Impairment
- 2.6 Discontinuation of Eslicarbazepine Acetate Tablets

### 3 DOSAGE FORMS AND STRENGTHS

### 4 CONTRAINDICATIONS

### 5 WARNINGS AND PRECAUTIONS

- 5.1 Suicidal Behavior and Ideation
- 5.2 Serious Dermatologic Reactions
- 5.3 Drug Reaction with Eosinophilia and Systemic Symptoms (DRESS)/Multiorgan Hypersensitivity
- 5.4 Anaphylactic Reactions and Angioedema
- 5.5 Hyponatremia
- 5.6 Neurological Adverse Reactions
- 5.7 Withdrawal of AEDs
- 5.8 Drug Induced Liver Injury
- 5.9 Abnormal Thyroid Function Tests
- 5.10 Hematologic Adverse Reactions

### 6 ADVERSE REACTIONS

- 6.1 Clinical Trials Experience
- 6.2 Postmarketing Experience

### 7 DRUG INTERACTIONS

- 7.1 Other Antiepileptic Drugs
- 7.2 CYP2C19 Substrates
- 7.3 CYP3A4 Substrates
- 7.4 Oral Contraceptives

### 8 USE IN SPECIFIC POPULATIONS

- 8.1 Pregnancy

### 8.2 Lactation

### 8.3 Females and Males of Reproductive Potential

### 8.4 Pediatric Use

### 8.5 Geriatric Use

### 8.6 Patients with Renal Impairment

### 8.7 Patients with Hepatic Impairment

### 9 DRUG ABUSE AND DEPENDENCE

### 9.1 Controlled Substance

### 9.2 Abuse

### 9.3 Dependence

### 10 OVERDOSAGE

### 10.1 Signs, Symptoms, and Laboratory Findings of Acute Overdose in Humans

### 10.2 Treatment or Management of Overdose

### 11 DESCRIPTION

### 12 CLINICAL PHARMACOLOGY

### 12.1 Mechanism of Action

### 12.2 Pharmacodynamics

### 12.3 Pharmacokinetics

### 13 NONCLINICAL TOXICOLOGY

### 13.1 Carcinogenesis, Mutagenesis, Impairment of Fertility

### 14 CLINICAL STUDIES

### 14.1 Monotherapy for Partial-Onset Seizures

### 14.2 Adjunctive Therapy for Partial-Onset Seizures

### 15 REFERENCES

### 16 HOW SUPPLIED/STORAGE AND HANDLING

### 16.1 How Supplied

### 16.2 Storage and Handling

### 17 PATIENT COUNSELING INFORMATION

\*Sections or subsections omitted from the full prescribing information are not listed.

## FULL PRESCRIBING INFORMATION

### 1 INDICATIONS AND USAGE

Eslicarbazepine acetate tablets are indicated for the treatment of partial-onset seizures in patients 4 years of age and older.

### 2 DOSAGE AND ADMINISTRATION

#### 2.1 Important Administration Instructions

Instruct patients to administer eslicarbazepine acetate tablets either as whole or as crushed tablets. Instruct patients to take eslicarbazepine acetate tablets either with or without food. The eslicarbazepine acetate tablets dosing regimen depends on age, weight, and renal function.

#### 2.2 General Dosing Recommendations

##### Monotherapy and Adjunctive Therapy

##### *Adult Patients*

The recommended initial dosage of eslicarbazepine acetate tablets is 400 mg administered orally once daily. For some patients, treatment may be initiated at 800 mg once daily if the need for seizure reduction outweighs an increased risk of adverse reactions during initiation [see *Adverse Reactions* (6.1)]. Dosage should be increased in weekly increments of 400 mg to 600 mg, based on clinical response and tolerability, to a recommended maintenance dosage of 800 mg to 1,600 mg once daily. For patients on eslicarbazepine acetate tablets monotherapy, the 800 mg once daily maintenance dose should generally be considered in patients who are unable to tolerate a 1,200 mg daily dose. For patients on eslicarbazepine acetate tablets adjunctive therapy, the 1,600 mg daily dose should generally be considered in patients who did not achieve a satisfactory response with a 1,200 mg daily dose.

##### *Pediatric Patients (4 to 17 Years of Age)*

In pediatric patients 4 to 17 years of age, the recommended dosing regimen is dependent upon body weight and is administered orally once daily. The recommended initial dosage of eslicarbazepine acetate tablets are shown in Table 1. Dosage should be increased based on clinical response and tolerability, no more frequently than once per week. Titration increments should not exceed those shown in Table 1. The daily maintenance dosage should not exceed the maintenance dosage for each body weight range shown in Table 1.

**Table 1: Eslicarbazepine Acetate Tablets Once Daily Dosage Schedule for Pediatric Patients 4 to 17 Years of Age**

Body Weight Range	Initial and Maximum Titration Increment Dosage (mg/day)	Maintenance Dosage (mg/day)
11 to 21 kg	200	400 to 600
22 to 31 kg	300	500 to 800
32 to 38 kg	300	600 to 900
more than 38 kg	400	800 to 1,200

#### 2.3 Dosage Modifications with Other Antiepileptic Drugs

Some adverse reactions occur more frequently when patients take eslicarbazepine acetate adjunctively with carbamazepine [see *Warnings and Precautions* (5.6)]. However, carbamazepine reduces the plasma concentration of eslicarbazepine [see *Drug Interactions* (7.1)]. When eslicarbazepine acetate and

carbamazepine are taken concomitantly, the dose of eslicarbazepine acetate or carbamazepine may need to be adjusted based on efficacy and tolerability. For patients taking other enzyme-inducing AEDs (i.e., phenobarbital, phenytoin, and primidone), higher doses of eslicarbazepine acetate may be needed [*see Drug Interactions (7.1)*].

Eslicarbazepine acetate should not be taken as an adjunctive therapy with oxcarbazepine.

## **2.4 Dosage Modifications in Patients with Renal Impairment**

In patients with moderate and severe renal impairment (i.e., creatinine clearance < 50 mL/min), the initial, titration, and maintenance dosages should generally be reduced by 50 %. Titration and maintenance dosages may be adjusted according to clinical response [*see Use in Specific Populations (8.6) and Clinical Pharmacology (12.3)*].

## **2.5 Patients with Hepatic Impairment**

Dose adjustments are not required in patients with mild to moderate hepatic impairment. Use of eslicarbazepine acetate tablets in patients with severe hepatic impairment has not been studied, and use in these patients is not recommended [*see Use in Specific Populations (8.7) and Clinical Pharmacology (12.3)*].

## **2.6 Discontinuation of Eslicarbazepine Acetate Tablets**

When discontinuing eslicarbazepine acetate tablets, reduce the dosage gradually and avoid abrupt discontinuation in order to minimize the risk of increased seizure frequency and status epilepticus [*see Warnings and Precautions (5.7)*].

# **3 DOSAGE FORMS AND STRENGTHS**

Eslicarbazepine acetate tablets are available in the following shapes and color:

200 mg tablets: White to off-white, oval, biconvex tablet with functional scoring, engraved “E” score “S” on one side, “APO” on the other side.

400 mg: White to off white, round, biconvex tablet. Engraved “ESL” over “400” on one side, “APO” on the other side.

600 mg: White to off-white, capsule shape, biconvex tablet with functional scoring, engraved “ESL” score “600” on one side, “APO” on the other side.

800 mg: White to off-white, capsule shape, biconvex tablet with functional scoring, engraved “ESL” score “800” on one side, “APO” on the other side.

# **4 CONTRAINDICATIONS**

Eslicarbazepine acetate tablets are contraindicated in patients with a hypersensitivity to eslicarbazepine acetate or oxcarbazepine [*see Warnings and Precautions (5.2, 5.3, and 5.4)*].

## 5 WARNINGS AND PRECAUTIONS

### 5.1 Suicidal Behavior and Ideation

Antiepileptic drugs (AEDs), including eslicarbazepine acetate, increase the risk of suicidal thoughts or behavior in patients taking these drugs for any indication. Patients treated with any AED for any indication should be monitored for the emergence or worsening of depression, suicidal thoughts or behavior, and/or any unusual changes in mood or behavior.

Pooled analyses of 199 placebo-controlled clinical trials (mono- and adjunctive therapy) of 11 different AEDs showed that patients randomized to one of the AEDs had approximately twice the risk (adjusted Relative Risk 1.8, 95 % confidence interval [CI]: 1.2, 2.7) of suicidal thinking or behavior compared to patients randomized to placebo. In these trials, which had a median treatment duration of 12 weeks, the estimated incidence of suicidal behavior or ideation among 27,863 AED-treated patients was 0.43 %, compared to 0.24 % among 16,029 placebo-treated patients, representing an increase of approximately one case of suicidal thinking or behavior for every 530 patients treated. There were four suicides in drug-treated patients in the trials and none in placebo-treated patients, but the number of events is too small to allow any conclusion about drug effect on suicide.

The increased risk of suicidal thoughts or behavior with AEDs was observed as early as one week after starting treatment with AEDs and persisted for the duration of treatment assessed. Because most trials included in the analysis did not extend beyond 24 weeks, the risk of suicidal thoughts or behavior beyond 24 weeks could not be assessed.

The risk of suicidal thoughts or behavior was generally consistent among drugs in the data analyzed. The finding of increased risk with AEDs of varying mechanisms of action and across a range of indications suggests that the risk applies to all AEDs used for any indication. The risk did not vary substantially by age (5 to 100 years) in the clinical trials analyzed.

Table 3 shows absolute and relative risk by indication for all evaluated AEDs.

**Table 3: Risk of Suicidal Thoughts or Behaviors by Indication for Antiepileptic Drugs in the Pooled Analysis**

Indication	Placebo Patients with Events Per 1,000 Patients	Drug Patients with Events Per 1,000 Patients	Relative Risk: Incidence of Events in Drug Patients/Incidence in Placebo Patients	Risk Differences: Additional Drug Patients with Events Per 1,000 Patients
Epilepsy	1.0	3.4	3.5	2.4
Psychiatric	5.7	8.5	1.5	2.9
Other	1.0	1.8	1.9	0.9
Total	2.4	4.3	1.8	1.9

The relative risk for suicidal thoughts or behavior was higher in clinical trials in patients with epilepsy than in clinical trials in patients with psychiatric or other conditions, but the absolute risk differences were similar for epilepsy and psychiatric indications.

Anyone considering prescribing eslicarbazepine acetate tablets or any other AED must balance this risk with the risk of untreated illness. Epilepsy and many other illnesses for which AEDs are prescribed are themselves associated with morbidity and mortality and an increased risk of suicidal thoughts and behavior. Should suicidal thoughts and behavior emerge during treatment, the prescriber needs to consider whether the emergence of these symptoms in any given patient may be related to the illness being treated.

Patients, their caregivers, and families should be informed that AEDs increase the risk of suicidal thoughts and behavior and should be advised of the need to be alert for the emergence or worsening of the signs and symptoms of depression; any unusual changes in mood or behavior; or the emergence of suicidal thoughts, behavior, or thoughts about self-harm. Behaviors of concern should be reported immediately to healthcare providers.

## 5.2 Serious Dermatologic Reactions

Serious dermatologic reactions including Stevens-Johnson Syndrome (SJS) and toxic epidermal necrolysis (TEN) have been reported in association with eslicarbazepine acetate use. Serious and sometimes fatal dermatologic reactions, including TEN and SJS, have also been reported in patients using oxcarbazepine or carbamazepine which are chemically related to eslicarbazepine acetate. The reporting rate of these reactions associated with oxcarbazepine use exceeds the background incidence rate estimates by a factor of 3- to 10-fold. The reporting rates for eslicarbazepine acetate have not been determined.

Risk factors for the development of serious and potentially fatal dermatologic reactions with eslicarbazepine acetate use have not been identified.

If a patient develops a dermatologic reaction while taking eslicarbazepine acetate, discontinue eslicarbazepine acetate use, unless the reaction is clearly not drug-related. Patients with a prior dermatologic reaction with oxcarbazepine, carbamazepine, or eslicarbazepine acetate should ordinarily not be treated with eslicarbazepine acetate tablets [*see Contraindications (4)*].

## 5.3 Drug Reaction with Eosinophilia and Systemic Symptoms (DRESS)/Multiorgan Hypersensitivity

Drug Reaction with Eosinophilia and Systemic Symptoms (DRESS), also known as Multiorgan Hypersensitivity, has been reported in patients taking eslicarbazepine acetate. DRESS may be fatal or life-threatening. DRESS typically, although not exclusively, presents with fever, rash, and/or lymphadenopathy, in association with other organ system involvement, such as hepatitis, nephritis, hematological abnormalities, myocarditis, or myositis sometimes resembling an acute viral infection. Eosinophilia is often present. Because this disorder is variable in its expression, other organ systems not noted here may be involved. It is important to note that early manifestations of hypersensitivity, such as fever or lymphadenopathy, may be present even though rash is not evident. If such signs or symptoms are present, the patient should be evaluated immediately. Eslicarbazepine acetate should be discontinued and not be resumed if an alternative etiology for the signs or symptoms cannot be established. Patients with a prior DRESS reaction with either oxcarbazepine or eslicarbazepine acetate should not be treated with eslicarbazepine acetate tablets [*see Contraindications (4)*].

## 5.4 Anaphylactic Reactions and Angioedema

Rare cases of anaphylaxis and angioedema have been reported in patients taking eslicarbazepine acetate. Anaphylaxis and angioedema associated with laryngeal edema can be fatal. If a patient develops any of these reactions after treatment with eslicarbazepine acetate, the drug should be discontinued. Patients with a prior anaphylactic-type reaction with either oxcarbazepine or eslicarbazepine acetate should not be treated with eslicarbazepine acetate tablets [*see Contraindications (4)*].

## 5.5 Hyponatremia

Clinically significant hyponatremia (sodium < 125 mEq/L) can develop in patients taking eslicarbazepine acetate. Measurement of serum sodium and chloride levels should be considered during maintenance treatment with eslicarbazepine acetate, particularly if the patient is receiving other medications known to decrease serum sodium levels, and should be performed if symptoms of hyponatremia develop (e.g., nausea/vomiting, malaise, headache, lethargy, confusion, irritability, muscle weakness/spasms, obtundation, or increase in seizure frequency or severity). Cases of symptomatic hyponatremia and syndrome of inappropriate antidiuretic hormone secretion (SIADH) have been reported during postmarketing use. In

clinical trials, patients whose treatment with eslicarbazepine acetate was discontinued because of hyponatremia generally experienced normalization of serum sodium within a few days without additional treatment.

In the controlled adult adjunctive epilepsy trials, 4/415 patients (1 %) treated with 800 mg and 6/410 (1.5 %) patients treated with 1,200 mg of eslicarbazepine acetate had at least one serum sodium value less than 125 mEq/L, compared to none of the patients assigned to placebo. A higher percentage of eslicarbazepine acetate-treated patients (5.1 %) than placebo-treated patients (0.7 %) experienced decreases in sodium values of more than 10 mEq/L. These effects were dose-related and generally appeared within the first 8 weeks of treatment (as early as after 3 days). Serious, life-threatening complications were reported with eslicarbazepine acetate -associated hyponatremia (as low as 112 mEq/L) including seizures, severe nausea/vomiting leading to dehydration, severe gait instability, and injury. Some patients required hospitalization and discontinuation of eslicarbazepine acetate. Concurrent hypochloremia was also present in patients with hyponatremia. Hyponatremia was also observed in adult monotherapy trials and in pediatric trials. Depending on the severity of hyponatremia, the dose of eslicarbazepine acetate may need to be reduced or discontinued.

## **5.6 Neurological Adverse Reactions**

### **Dizziness and Disturbance in Gait and Coordination**

Eslicarbazepine acetate causes dose-related increases in adverse reactions related to dizziness and disturbance in gait and coordination (dizziness, ataxia, vertigo, balance disorder, gait disturbance, nystagmus, and abnormal coordination) [*see Adverse Reactions (6.1)*]. In controlled adult adjunctive epilepsy trials, these events were reported in 26 % and 38 % of patients randomized to receive eslicarbazepine acetate at doses of 800 mg and 1,200 mg/day, respectively, compared to 12 % of placebo-treated patients. Events related to dizziness and disturbance in gait and coordination were more often serious in eslicarbazepine acetate -treated patients than in placebo-treated patients (2 % vs. 0 %), and more often led to study withdrawal in eslicarbazepine acetate -treated patients than in placebo-treated patients (9 % vs. 0.7 %). There was an increased risk of these adverse reactions during the titration period (compared to the maintenance period) and there also may be an increased risk of these adverse reactions in patients 60 years of age and older compared to younger adults. Nausea and vomiting also occurred with these events. Adverse reactions related to dizziness and disturbance in gait and coordination were also observed in adult monotherapy trials and pediatric trials.

The incidence of dizziness was greater with the concomitant use of eslicarbazepine acetate and carbamazepine compared to the use of eslicarbazepine acetate without carbamazepine in adult and pediatric trials. Therefore, consider dosage modifications of both eslicarbazepine acetate and carbamazepine if these drugs are used concomitantly [*see Dosage and Administration (2.3)*].

### **Somnolence and Fatigue**

Eslicarbazepine acetate causes dose-dependent increases in somnolence and fatigue-related adverse reactions (fatigue, asthenia, malaise, hypersomnia, sedation, and lethargy). In the controlled adult adjunctive epilepsy trials, these events were reported in 13 % of placebo patients, 16 % of patients randomized to receive 800 mg/day eslicarbazepine acetate, and 28 % of patients randomized to receive 1,200 mg/day eslicarbazepine acetate. Somnolence and fatigue-related events were serious in 0.3 % of eslicarbazepine acetate -treated patients (and 0 placebo patients) and led to discontinuation in 3 % of eslicarbazepine acetate -treated patients (and 0.7 % of placebo-treated patients). Somnolence and fatigue-related reactions were also observed in adult monotherapy trials and in pediatric trials.

### **Cognitive Dysfunction**

Eslicarbazepine acetate causes dose-dependent increases in cognitive dysfunction-related events in adults (memory impairment, disturbance in attention, amnesia, confusional state, aphasia, speech disorder,



slowness of thought, disorientation, and psychomotor retardation). In the controlled adult adjunctive epilepsy trials, these events were reported in 1 % of placebo patients, 4 % of patients randomized to receive 800 mg/day eslicarbazepine acetate, and 7 % of patients randomized to receive 1,200 mg/day eslicarbazepine acetate. Cognitive dysfunction-related events were serious in 0.2 % of eslicarbazepine acetate -treated patients (and 0.2 % of placebo patients) and led to discontinuation in 1 % of eslicarbazepine acetate - treated patients (and 0.5 % of placebo-treated patients). Cognitive dysfunction events were also observed in adult monotherapy trials.

### Visual Changes

Eslicarbazepine acetate causes dose-dependent increases in events related to visual changes including diplopia, blurred vision, and impaired vision. In the controlled adult adjunctive epilepsy trials, these events were reported in 16 % of patients randomized to receive eslicarbazepine acetate compared to 6 % of placebo patients. Eye events were serious in 0.7 % of eslicarbazepine acetate -treated patients (and 0 placebo patients) and led to discontinuation in 4 % of eslicarbazepine acetate -treated patients (and 0.2 % of placebo-treated patients). There was an increased risk of these adverse reactions during the titration period (compared to the maintenance period) and also in patients 60 years of age and older (compared to younger adults). The incidence of diplopia was greater with the concomitant use of eslicarbazepine acetate and carbamazepine compared to the use of eslicarbazepine acetate without carbamazepine (up to 16 % vs. 6 %, respectively) [*see Dosage and Administration (2.3)*]. Similar adverse reactions related to visual changes were also observed in adult monotherapy trials and in pediatric trials.

### Hazardous Activities

Prescribers should advise patients against engaging in hazardous activities requiring mental alertness, such as operating motor vehicles or dangerous machinery, until the effect of eslicarbazepine acetate is known.

## **5.7 Withdrawal of AEDs**

As with all antiepileptic drugs, eslicarbazepine acetate should be withdrawn gradually because of the risk of increased seizure frequency and status epilepticus, but if withdrawal is needed because of a serious adverse event, rapid discontinuation can be considered.

## **5.8 Drug Induced Liver Injury**

Hepatic effects, ranging from mild to moderate elevations in transaminases (> 3 times the upper limit of normal) to rare cases with concomitant elevations of total bilirubin (> 2 times the upper limit of normal) have been reported with eslicarbazepine acetate use. Baseline evaluations of liver laboratory tests are recommended. The combination of transaminase elevations and elevated bilirubin without evidence of obstruction is generally recognized as an important predictor of severe liver injury. Eslicarbazepine acetate should be discontinued in patients with jaundice or other evidence of significant liver injury (e.g., laboratory evidence).

## **5.9 Abnormal Thyroid Function Tests**

Dose-dependent decreases in serum T3 and T4 (free and total) values have been observed in patients taking eslicarbazepine acetate. These changes were not associated with other abnormal thyroid function tests suggesting hypothyroidism. Abnormal thyroid function tests should be clinically evaluated.

## **5.10 Hematologic Adverse Reactions**

Rare cases of pancytopenia, agranulocytosis, and leukopenia have been reported during postmarketing use in patients treated with eslicarbazepine acetate. Discontinuation of eslicarbazepine acetate should be considered in patients who develop pancytopenia, agranulocytosis, or leukopenia.

## 6 ADVERSE REACTIONS

The following adverse reactions are described in more detail in the *Warnings and Precautions* section of the label:

- Suicidal Behavior and Ideation [*see Warnings and Precautions (5.1)*]
- Serious Dermatologic Reactions [*see Warnings and Precautions (5.2)*]
- Drug Reaction with Eosinophilia and Systemic Symptoms (DRESS)/Multiorgan Hypersensitivity [*see Warnings and Precautions (5.3)*]
- Anaphylactic Reactions and Angioedema [*see Warnings and Precautions (5.4)*]
- Hyponatremia [*see Warnings and Precautions (5.5)*]
- Neurological Adverse Reactions [*see Warnings and Precautions (5.6)*]
- Drug Induced Liver Injury [*see Warnings and Precautions (5.8)*]
- Abnormal Thyroid Function Tests [*see Warnings and Precautions (5.9)*]
- Pancytopenia, Agranulocytosis, and Leukopenia [*see Warnings and Precautions (5.10)*]

### 6.1 Clinical Trials Experience

Because clinical trials are conducted under widely varying conditions, adverse reaction rates observed in the clinical trials of a drug cannot be directly compared to rates in the clinical trials of another drug and may not reflect the rates observed in practice.

#### Adult Patients

In monotherapy trials in patients with partial-onset seizures [Study 1 and Study 2, *see Clinical Studies (14.1)*], 365 patients received eslicarbazepine acetate, of whom 225 were treated for longer than 12 months and 134 for longer than 24 months. Of the patients in those trials, 95 % were between 18 and 65 years old; 48 % were male, and 84 % were Caucasian. Across controlled and uncontrolled trials in patients receiving adjunctive therapy for partial-onset seizures, 1,195 patients received eslicarbazepine acetate, of whom 586 were treated for longer than 6 months and 462 for longer than 12 months. In the placebo controlled adjunctive therapy trials in patients with partial-onset seizures (Study 3, Study 4 and Study 5), 1,021 patients received eslicarbazepine acetate. Of the patients in those trials, approximately 95 % were between 18 and 60 years old, approximately 50 % were male, and approximately 80 % were Caucasian.

#### *Monotherapy Historical Control Trials*

In the monotherapy epilepsy trials (Study 1 and Study 2), 13 % of patients randomized to receive eslicarbazepine acetate tablets at the recommended doses of 1,200 mg and 1,600 mg once daily discontinued from the trials as a result of an adverse event. The adverse reaction most commonly ( $\geq 1$  % on eslicarbazepine acetate) leading to discontinuation was hyponatremia.

Adverse reactions observed in these studies were generally similar to those observed and attributed to drug in adjunctive placebo-controlled studies. Because these studies did not include a placebo control group, causality could not be established.

Dizziness, nausea, somnolence, and fatigue were all reported at lower incidences during the AED Withdrawal Phase and Monotherapy Phase compared with the Titration Phase.

#### *Adjunctive Therapy Controlled Trials*

In the controlled adjunctive therapy epilepsy trials (Study 3, Study 4, and Study 5), the rate of discontinuation as a result of any adverse reaction was 14 % for the 800 mg dose, 25 % for the 1,200 mg dose, and 7 % in subjects randomized to placebo. The adverse reactions most commonly ( $\geq 1$  % in any eslicarbazepine acetate treatment group, and greater than placebo) leading to discontinuation, in descending order of frequency, were dizziness, nausea, vomiting, ataxia, diplopia, somnolence, headache, blurred vision, vertigo, asthenia, fatigue, rash, dysarthria, and tremor.



The most frequently reported adverse reactions in patients receiving eslicarbazepine acetate tablets at doses of 800 mg or 1,200 mg ( $\geq 4\%$  and  $\geq 2\%$  greater than placebo) were dizziness, somnolence, nausea, headache, diplopia, vomiting, fatigue, vertigo, ataxia, blurred vision, and tremor.

Table 4 gives the incidence of adverse reactions that occurred in  $\geq 2\%$  of subjects with partial-onset seizures in any eslicarbazepine acetate treatment group and for which the incidence was greater than placebo during the controlled clinical trials. Adverse reactions during titration were less frequent for patients who began therapy at an initial dose of 400 mg for 1 week and then increased to 800 mg compared to patients who initiated therapy at 800 mg.

**Table 4: Adverse Reactions Incidence in Pooled Controlled Clinical Trials of Adjunctive Therapy in Adults (Events  $\geq 2\%$  of Patients in the Eslicarbazepine Acetate Tablets 800 mg or 1,200 mg Dose Group and More Frequent Than in the Placebo Group)**

	Placebo	Eslicarbazepine Acetate Tablets	
		800 mg	1,200 mg
	(N = 426) %	(N = 415) %	(N = 410) %
Ear and labyrinth disorders Vertigo	<1	2	6
Eye disorders Diplopia Blurred vision Visual impairment	2 1 1	9 6 2	11 5 1
Gastrointestinal disorders Nausea Vomiting Diarrhea Constipation Abdominal pain Gastritis	5 3 3 1 1 <1	10 6 4 2 2 2	16 10 2 2 2 <1
General disorders and administration site conditions Fatigue Asthenia Gait disturbance Peripheral edema	4 2 <1 1	4 2 2 2	7 3 2 1
Infections and Infestations Urinary tract infections	1	2	2
Injury, poisoning and procedural complications Fall	1	3	1
Metabolism and nutrition disorders Hyponatremia	<1	2	2
Nervous system disorders Dizziness Somnolence Headache Ataxia Balance disorder Tremor Dysarthria Memory impairment Nystagmus	9 8 9 2 <1 1 0 <1 <1	20 11 13 4 3 2 1 1 1	28 18 15 6 3 4 2 2 2

	Placebo	Eslicarbazepine Acetate Tablets	
		800 mg	1,200 mg
	(N = 426) %	(N = 415) %	(N = 410) %
Psychiatric disorders			
Depression	2	1	3
Insomnia	1	2	2
Respiratory, thoracic and mediastinal disorders			
Cough	1	2	1
Skin and subcutaneous tissue disorders			
Rash	1	1	3
Vascular disorders			
Hypertension	1	1	2

### Pediatric Patients (4 to 17 Years of Age)

Clinical studies of pediatric patients 4 to 17 years of age were conducted which support the safety and tolerability of eslicarbazepine acetate for the treatment of partial-onset seizures. Across studies in pediatric patients with partial-onset seizures, 393 patients ages 4 to 17 years received eslicarbazepine acetate, of whom 265 received eslicarbazepine acetate for at least 1 year. Adverse reactions reported in clinical studies of pediatric patients 4 to 17 years of age were similar to those seen in adult patients.

### Other Adverse Reactions with Eslicarbazepine Acetate Use

Compared to placebo, eslicarbazepine acetate use was associated with slightly higher frequencies of decreases in hemoglobin and hematocrit, increases in total cholesterol, triglycerides, and LDL, and increases in creatine phosphokinase.

### Adverse Reactions Based on Gender and Race

No significant gender differences were noted in the incidence of adverse reactions. Although there were few non-Caucasian patients, no differences in the incidences of adverse reactions compared to Caucasian patients were observed.

## **6.2 Postmarketing Experience**

The following adverse reactions have been identified during post-approval use of eslicarbazepine acetate. Because these reactions are reported voluntarily from a population of uncertain size, it is not always possible to reliably estimate their frequency or establish a causal relationship to drug exposure:

Hematologic and Lymphatic Systems: leukopenia, agranulocytosis, thrombocytopenia, megaloblastic anemia, and pancytopenia [*see Warnings and Precautions (5.10)*]

Metabolism and Nutrition Disorders: syndrome of inappropriate antidiuretic hormone secretion (SIADH) [*see Warnings and Precautions (5.5)*]

## **7 DRUG INTERACTIONS**

### **7.1 Other Antiepileptic Drugs**

Several AEDs (e.g., carbamazepine, phenobarbital, phenytoin, and primidone) can induce enzymes that metabolize eslicarbazepine acetate and can cause decreased plasma concentrations of eslicarbazepine [*see Clinical Pharmacology (12.3)*]. Higher doses of eslicarbazepine acetate tablets may be needed [*see Dosage and Administration (2.4)*].

## 7.2 CYP2C19 Substrates

Eslicarbazepine acetate can inhibit CYP2C19, which can cause increased plasma concentrations of drugs that are metabolized by this isoenzyme (e.g., phenytoin, clobazam, and omeprazole) [see *Clinical Pharmacology* (12.3)]. Dose adjustment may be needed.

## 7.3 CYP3A4 Substrates

*In vivo* studies suggest that eslicarbazepine acetate can induce CYP3A4, decreasing plasma concentrations of drugs that are metabolized by this isoenzyme (e.g., simvastatin, lovastatin) [see *Clinical Pharmacology* (12.3)]. Dose adjustment of simvastatin and lovastatin may be needed if a clinically significant change in lipids is noted.

## 7.4 Oral Contraceptives

Because concomitant use of eslicarbazepine acetate and ethinylestradiol and levonorgestrel is associated with lower plasma levels of these hormones, females of reproductive potential should use additional or alternative non-hormonal birth control.

# 8 USE IN SPECIFIC POPULATIONS

## 8.1 Pregnancy

### Pregnancy Exposure Registry

There is a pregnancy exposure registry that monitors pregnancy outcomes in women exposed to AEDs, such as eslicarbazepine acetate, during pregnancy. Encourage women who are taking eslicarbazepine acetate tablets during pregnancy to enroll in the North American Antiepileptic Drug (NAAED) Pregnancy Registry by calling 1-888-233-2334 or visiting <http://www.aedpregnancyregistry.org>.

### Risk Summary

Limited available data with eslicarbazepine acetate use in pregnant women are insufficient to inform a drug-associated risk of adverse developmental outcomes. In oral studies conducted in pregnant mice, rats, and rabbits, eslicarbazepine acetate demonstrated developmental toxicity, including increased incidence of malformations (mice), embryolethality (rats), and fetal growth retardation (all species), at clinically relevant doses (*see Data*). Advise a pregnant woman of the potential risk to a fetus.

In the U.S. general population, the estimated background risk of major birth defects and miscarriage in clinically recognized pregnancies is 2 to 4 % and 15 to 20 %, respectively. The background risk of major birth defects and miscarriage for the indicated population is unknown.

### Data

#### *Animal Data*

When eslicarbazepine acetate was orally administered (150, 350, 650 mg/kg/day) to pregnant mice throughout organogenesis, increased incidences of fetal malformations was observed at all doses and fetal growth retardation was observed at the mid and high doses. A no-effect dose for adverse developmental effects was not identified. At the lowest dose tested, plasma eslicarbazepine exposure ( $C_{max}$ , AUC) is less than that in humans at the maximum recommended human dose (MRHD, 1,600 mg/day).

Oral administration of eslicarbazepine acetate (40, 160, 320 mg/kg/day) to pregnant rabbits throughout organogenesis resulted in fetal growth retardation and increased incidences of skeletal variations at the mid and high doses. The no-effect dose (40 mg/kg/day) is less than the MRHD on a mg/m<sup>2</sup> basis.

Oral administration to pregnant rats (65, 125, 250 mg/kg/day) throughout organogenesis resulted in embryolethality at all doses, increased incidences of skeletal variations at the mid and high doses, and fetal

growth retardation at the high dose. The lowest dose tested (65 mg/kg/day) is less than the MRHD on a mg/m<sup>2</sup> basis.

When eslicarbazepine acetate was orally administered to female mice during pregnancy and lactation (150, 350, 650 mg/kg/day), the gestation period was prolonged at the highest dose tested. In offspring, a persistent reduction in offspring body weight and delayed physical development and sexual maturation were observed at the mid and high doses. The lowest dose tested (150 mg/kg/day) is less than the MRHD on a mg/m<sup>2</sup> basis.

When eslicarbazepine acetate was orally administered (65, 125, 250 mg/kg/day) to rats during pregnancy and lactation, reduced offspring body weight was seen at the mid and high doses. Delayed sexual maturation and a neurological deficit (decreased motor coordination) were observed at the highest dose tested. The no-effect dose for adverse developmental effects (65 mg/kg/day) is less than the MRHD on a mg/m<sup>2</sup> basis.

The rat data are of uncertain relevance to humans because of differences in metabolic profile between species.

## **8.2 Lactation**

Eslicarbazepine is present in human milk. The effects of eslicarbazepine acetate on the breastfed infant or on milk production are unknown. The developmental and health benefits of breastfeeding should be considered along with the mother's clinical need for eslicarbazepine acetate and any potential adverse effects on the breastfed infant from eslicarbazepine acetate or from the underlying maternal condition.

## **8.3 Females and Males of Reproductive Potential**

### Contraception

Use of eslicarbazepine acetate tablets with hormonal contraceptives containing ethinylestradiol or levonorgestrel is associated with lower plasma levels of these hormones. Advise women of reproductive potential taking eslicarbazepine acetate tablets who are using a contraceptive containing ethinylestradiol or levonorgestrel to use additional or alternative non-hormonal birth control [*see Drug Interactions (7.4)*].

### Infertility

Eslicarbazepine acetate was evaluated in rats and mice for potential adverse impact on fertility of the parental and first generation [*see Nonclinical Toxicology (13.1)*]. In a fertility study in male and female mice, adverse developmental outcomes were observed in embryos. In a fertility study in male and female rats, impairment of female fertility by eslicarbazepine acetate was shown.

## **8.4 Pediatric Use**

Safety and effectiveness of eslicarbazepine acetate have been established in the age groups 4 to 17 years. Use of eslicarbazepine acetate in these age groups is supported by evidence from adequate and well-controlled studies of eslicarbazepine acetate in adults with partial-onset seizures, pharmacokinetic data from adult and pediatric patients, and safety data from clinical studies in 393 pediatric patients 4 to 17 years of age [*see Adverse Reactions (6.1) and Clinical Pharmacology (12.3)*].

Safety and effectiveness in pediatric patients below the age of 4 years have not been established.

### Animal Data

In a juvenile animal study in which eslicarbazepine acetate (40, 80, 160 mg/kg/day) was orally administered to young dogs for 10 months starting on postnatal day 21, adverse effects on bone growth (decreased bone mineral content and density) were seen in females at all doses at the end of the dosing period, but not at the end of a 2-month recovery period. Convulsions were seen at the highest dose tested. A no-effect dose for adverse effects in juvenile dogs was not identified. The lowest dose tested is less than the maximum recommended pediatric dose (1,200 mg/day) on a body surface area (mg/m<sup>2</sup>) basis.

A separate juvenile animal study was conducted to assess possible adverse effects on the immune system. Eslicarbazepine acetate (10, 40, 80 mg/kg/day) was orally administered to young dogs for 17 weeks starting on postnatal day 21. No effects on the immune system were observed.

## 8.5 Geriatric Use

There were insufficient numbers of patients  $\geq 65$  years old enrolled in the controlled adjunctive epilepsy trials (N = 15) to determine the efficacy of eslicarbazepine acetate in this patient population. The pharmacokinetics of eslicarbazepine acetate were evaluated in elderly healthy subjects (N = 12) (Figure 1). Although the pharmacokinetics of eslicarbazepine are not affected by age independently, dose selection should take in consideration the greater frequency of renal impairment and other concomitant medical conditions and drug therapies in the elderly patient. Dose adjustment is necessary if CrCl is  $< 50$  mL/min [see *Clinical Pharmacology* (12.3)].

## 8.6 Patients with Renal Impairment

Clearance of eslicarbazepine is decreased in patients with impaired renal function and is correlated with creatinine clearance. Dosage adjustment is necessary in patients with CrCl  $< 50$  mL/min (Figure 1) [see *Dosage and Administration* (2.4) and *Clinical Pharmacology* (12.3)].

## 8.7 Patients with Hepatic Impairment

Dose adjustments are not required in patients with mild to moderate hepatic impairment (Figure 1). Use of eslicarbazepine acetate tablets in patients with severe hepatic impairment has not been evaluated, and use in these patients is not recommended [see *Clinical Pharmacology* (12.3)].

# 9 DRUG ABUSE AND DEPENDENCE

## 9.1 Controlled Substance

Eslicarbazepine acetate is not a controlled substance.

## 9.2 Abuse

Prescription drug abuse is the intentional non-therapeutic use of a drug, even once, for its rewarding psychological or physiological effects. Drug addiction, which develops after repeated drug abuse, is characterized by a strong desire to take a drug despite harmful consequences, difficulty in controlling its use, giving a higher priority to drug use than to obligations, increased tolerance, and sometimes physical withdrawal. Drug abuse and drug addiction are separate and distinct from physical dependence (for example, abuse may not be accompanied by physical dependence) [see *Drug Abuse and Dependence* (9.3)].

In a human abuse study in recreational sedative abusers eslicarbazepine acetate showed no evidence of abuse. In Phase 1, 1.5 % of the healthy volunteers taking eslicarbazepine acetate reported euphoria compared to 0.4 % taking placebo.

## 9.3 Dependence

Physical dependence is characterized by withdrawal symptoms after abrupt discontinuation or a significant dose reduction of a drug.

There was some evidence of physical dependence or a withdrawal syndrome with eslicarbazepine acetate tablets in a physical dependence study conducted in healthy volunteers who were maintained at a daily dose of 800 mg eslicarbazepine acetate tablets for 4 weeks prior to discontinuation. The primary endpoint was the maximum change from steady-state baseline in the total score of the Physician's Withdrawal Checklist (PWC-34) during the 21-day discontinuation period. Eslicarbazepine acetate and placebo were shown to be equivalent on the primary endpoint. Two out of 8 secondary endpoints (visual analog scales for anxiety and

nausea) showed some increase in these symptoms for subjects who were maintained on eslicarbazepine acetate tablets and discontinued, versus subjects who were maintained on placebo. In general, AEDs should not be abruptly discontinued in patients with epilepsy because of the risk of increased seizure frequency and status epilepticus.

## 10 OVERDOSAGE

### 10.1 Signs, Symptoms, and Laboratory Findings of Acute Overdose in Humans

Symptoms of overdose are consistent with the known adverse reactions of eslicarbazepine acetate and include hyponatremia (sometimes severe), dizziness, nausea, vomiting, somnolence, euphoria, oral paraesthesia, ataxia, walking difficulties, and diplopia. The maximum dosage studied in open-label adult monotherapy treatment following withdrawal of concomitant AEDs was 2,400 mg once daily.

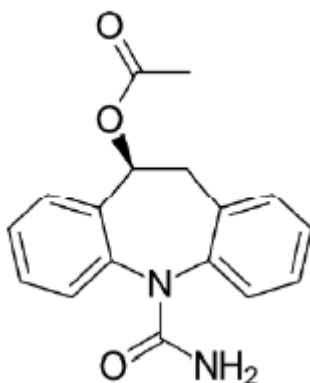
### 10.2 Treatment or Management of Overdose

There is no specific antidote for overdose with eslicarbazepine acetate tablets. Symptomatic and supportive treatment should be administered as appropriate. Removal of the drug by gastric lavage and/or inactivation by administering activated charcoal should be considered.

Standard hemodialysis procedures result in partial clearance of eslicarbazepine acetate. Hemodialysis may be considered based on the patient's clinical state or in patients with significant renal impairment.

## 11 DESCRIPTION

The chemical name of eslicarbazepine acetate is (10S)-10-(Acetoxy)-10,11-dihydro-5Hdibenz[b, f] azepine-5-carboxamide. Eslicarbazepine acetate tablets are a dibenz[b,f]azepine-5-carboxamide derivative. Its molecular formula is  $C_{17}H_{16}N_2O_3$  and its molecular weight is 296.33 g/mol. The chemical structure is:



Eslicarbazepine acetate is a white to almost white crystalline powder. It is freely soluble in dimethyl sulfoxide and dichloromethane, and soluble in acetonitrile.

Each eslicarbazepine acetate tablet contains 200 mg, 400 mg, 600 mg and 800 mg of eslicarbazepine acetate and the following inactive ingredients: colloidal silicon dioxide, croscarmellose sodium, magnesium stearate, and microcrystalline cellulose.



## 12 CLINICAL PHARMACOLOGY

### 12.1 Mechanism of Action

Eslicarbazepine acetate is extensively converted to eslicarbazepine, which is considered to be responsible for therapeutic effects in humans. The precise mechanism(s) by which eslicarbazepine exerts anticonvulsant activity is unknown but is thought to involve inhibition of voltage-gated sodium channels.

### 12.2 Pharmacodynamics

The effect of eslicarbazepine acetate on cardiac repolarization was evaluated in a randomized, double-blind, placebo- and active-controlled 4-period crossover trial in healthy adult men and women. Subjects received eslicarbazepine acetate tablets 1,200 mg once daily  $\times$  5 days, eslicarbazepine acetate tablets 2,400 mg once daily  $\times$  5 days, an active-control, moxifloxacin 400 mg  $\times$  1 dose on Day 5, and placebo once daily  $\times$  5 days. At both doses of eslicarbazepine acetate tablets, no significant effect on the QTc interval was detected.

### 12.3 Pharmacokinetics

The pharmacokinetics of eslicarbazepine is linear and dose-proportional in the dose range of 400 mg to 1,600 mg once daily, both in healthy adult subjects and patients. The apparent half-life of eslicarbazepine in plasma was 13 to 20 hours in adult epilepsy patients. Steady-state plasma concentrations are attained after 4 to 5 days of once daily dosing.

#### Absorption, Distribution, Metabolism, and Excretion

##### *Absorption*

Eslicarbazepine acetate is mostly undetectable (0.01 % of the systemic exposure) after oral administration. Eslicarbazepine, the major metabolite, is primarily responsible for the pharmacological effect of eslicarbazepine acetate tablets. Peak plasma concentrations ( $C_{\max}$ ) of eslicarbazepine are attained at 1 to 4 hours post-dose. Eslicarbazepine is highly bioavailable, because the amount of eslicarbazepine and glucuronide metabolites recovered in urine corresponded to more than 90 % of an eslicarbazepine acetate dose. Food has no effect on the pharmacokinetics of eslicarbazepine after oral administration of eslicarbazepine acetate.

##### *Distribution*

The binding of eslicarbazepine to plasma proteins is relatively low (< 40 %) and independent of concentration. *In vitro* studies have shown that plasma protein binding was not relevantly affected by the presence of warfarin, diazepam, digoxin, phenytoin, or tolbutamide. Similarly, the binding of warfarin, diazepam, digoxin, phenytoin or tolbutamide was not significantly affected by the presence of eslicarbazepine. The apparent volume of distribution of eslicarbazepine is 61 L for body weight of 70 kg based on population PK analysis.

##### *Metabolism*

Eslicarbazepine acetate is rapidly and extensively metabolized to its major active metabolite eslicarbazepine by hydrolytic first-pass metabolism. Eslicarbazepine corresponds to 91 % of systemic exposure. The systemic exposure to minor active metabolites of (R)-licarbazepine is 5 % and oxcarbazepine is 1 %. The inactive glucuronides of these active metabolites correspond to approximately 3 % of systemic exposure.

In *in vitro* studies in human liver microsomes, eslicarbazepine had no clinically relevant inhibitory effect on the activity of CYP1A2, CYP2A6, CYP2B6, CYP2D6, CYP2E1, and CYP3A4, and only a moderate inhibitory effect on CYP2C19. Studies with eslicarbazepine in fresh human hepatocytes showed no induction of enzymes involved in glucuronidation and sulfation of 7-hydroxy-coumarin. A mild activation of UGT1A1-mediated glucuronidation was observed in human hepatic microsomes.

No apparent autoinduction of metabolism has been observed with eslicarbazepine acetate in humans.

### *Excretion*

Eslicarbazepine acetate metabolites are eliminated from the systemic circulation primarily by renal excretion, in the unchanged and glucuronide conjugate forms. In total, eslicarbazepine and its glucuronide account for more than 90 % of total metabolites excreted in urine, approximately two thirds in the unchanged form and one third as glucuronide conjugate. Other minor metabolites account for the remaining 10 % excreted in the urine. In healthy subjects with normal renal function, the renal clearance of eslicarbazepine (approximately 20 mL/min) is substantially lower than glomerular filtration rate (80 to 120 mL/min), suggesting that renal tubular reabsorption occurs. The apparent plasma half-life of eslicarbazepine was 13 to 20 hours in epilepsy patients [see *Dosage and Administration (2.4)* and *Use in Specific Populations (8.6)*].

### Specific Populations

#### *Geriatric Patients ( $\geq 65$ Years of Age)*

The pharmacokinetic profile of eslicarbazepine was unaffected in elderly subjects with creatinine clearance  $> 60$  mL/min compared to healthy subjects (18 to 40 years) after single and repeated doses of 600 mg eslicarbazepine acetate tablets during 8 days of dosing. No dose adjustment is necessary in adults based on age, if CrCl is  $\geq 50$  mL/min.

#### *Pediatric Patients (4 to 17 Years of Age)*

A pharmacokinetic study of eslicarbazepine acetate was performed in 29 pediatric patients with partial-onset seizures. Limited pharmacokinetic sampling was also performed during controlled pediatric adjunctive therapy partial-onset seizure studies. As in adult patients, eslicarbazepine acetate is rapidly and extensively metabolized to its major active metabolite eslicarbazepine. The pharmacokinetics of eslicarbazepine is linear and dose- proportional in the dose range of 5 to 30 mg/kg/day. Peak plasma concentrations ( $C_{\max}$ ) of eslicarbazepine are attained at 1 to 3 hours post-dose.

A population pharmacokinetic analysis showed that body weight significantly correlates with the clearance of eslicarbazepine in pediatric patients; clearance increased with an increase in body weight. A weight- based dosing regimen is necessary to achieve eslicarbazepine exposures in pediatric patients aged 4 to 17 years similar to those observed in adults treated at effective doses of eslicarbazepine acetate [see *Dosage and Administration (2.2)*]. The apparent half-life of eslicarbazepine in plasma was 10 to 16 hours in pediatric patients with partial-onset seizures. Steady-state plasma concentrations are attained after 4 to 5 days of once-daily dosing.

The pharmacokinetics of eslicarbazepine in pediatric patients are similar when used as monotherapy or as adjunctive therapy for the treatment of partial-onset seizures.

#### *Gender*

Studies in healthy subjects and patients showed that pharmacokinetics of eslicarbazepine were not affected by gender.

#### *Race*

No clinically significant effect of race (Caucasian N = 849, Black N = 53, Asian N = 65, and Other N = 51) on the pharmacokinetics of eslicarbazepine was noted in a population pharmacokinetic analysis of pooled data from the clinical studies.

#### *Renal Impairment*

Eslicarbazepine acetate metabolites are eliminated from the systemic circulation primarily by renal excretion. The extent of systemic exposure of eslicarbazepine following an 800 mg single dose was increased by 62 % in patients with mild renal impairment (CrCl 50 to 80 mL/min), by 2-fold in patients with moderate renal impairment (CrCl 30 to 49 mL/min) and by 2.5-fold in patients with severe renal impairment (CrCl  $< 30$  mL/min) in comparison to the healthy subjects (CrCl  $> 80$  mL/min). Dosage adjustment is recommended in patients with creatinine clearance below 50 mL/min [see *Dosage and Administration (2.4)* and *Use in*

Specific Populations (8.6)].

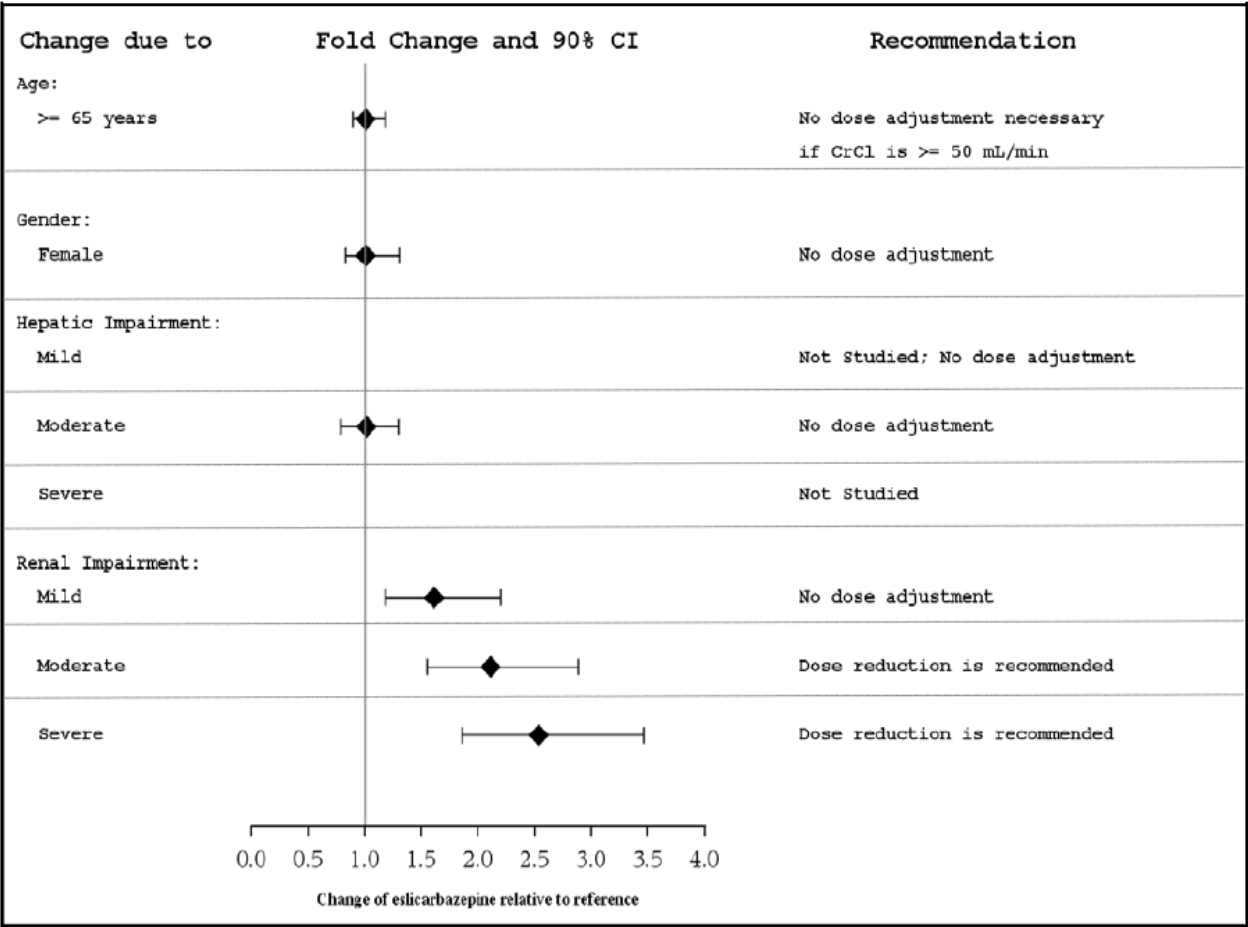
In patients with end stage renal disease, repeated hemodialysis removed eslicarbazepine acetate metabolites from systemic circulation.

Hepatic Impairment

The pharmacokinetics and metabolism of eslicarbazepine acetate was evaluated in healthy subjects and patients with moderate liver impairment (7 to 9 points on the Child-Pugh assessment) after multiple oral doses (see Figure 1). Moderate hepatic impairment did not affect the pharmacokinetics of eslicarbazepine acetate. No dose adjustment is recommended in patients with mild to moderate liver impairment.

The pharmacokinetics of eslicarbazepine acetate has not been studied in patients with severe hepatic impairment.

Figure 1: Impact of Intrinsic Factors on AUC of Eslicarbazepine

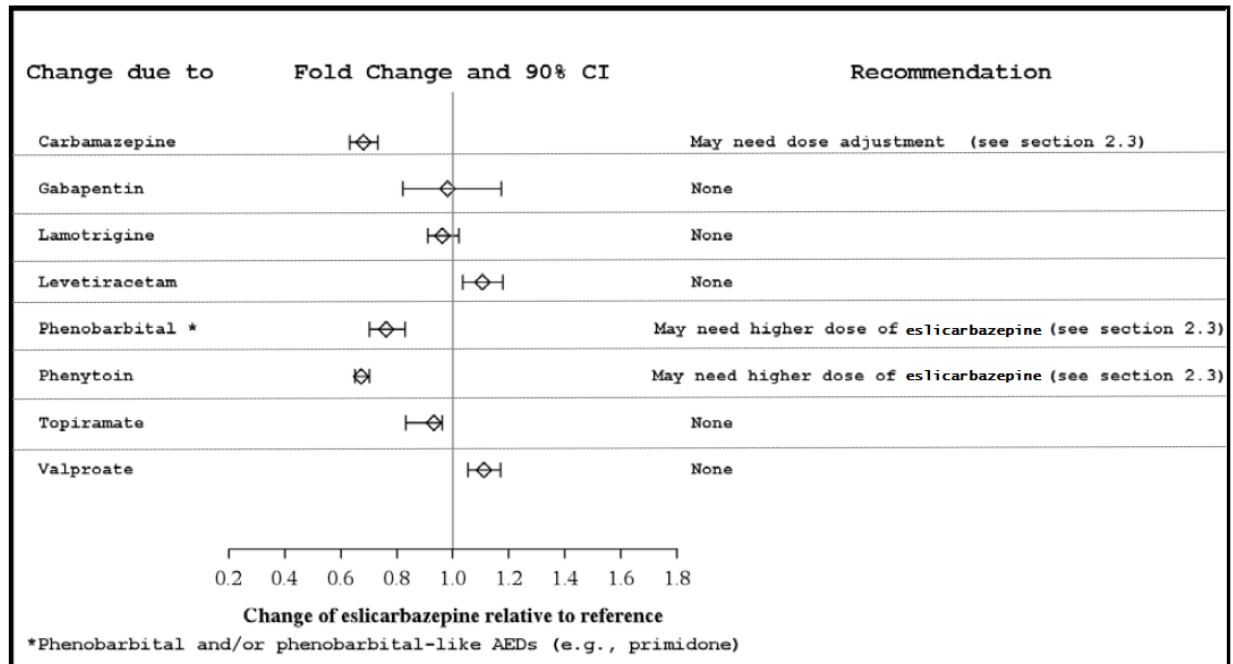


Drug Interaction Studies

Potential for Other AEDs to Affect Eslicarbazepine

The potential impact of other AEDs on the systemic exposure (area under the curve, AUC) of eslicarbazepine, the active metabolite of eslicarbazepine acetate, is shown in Figure 2:

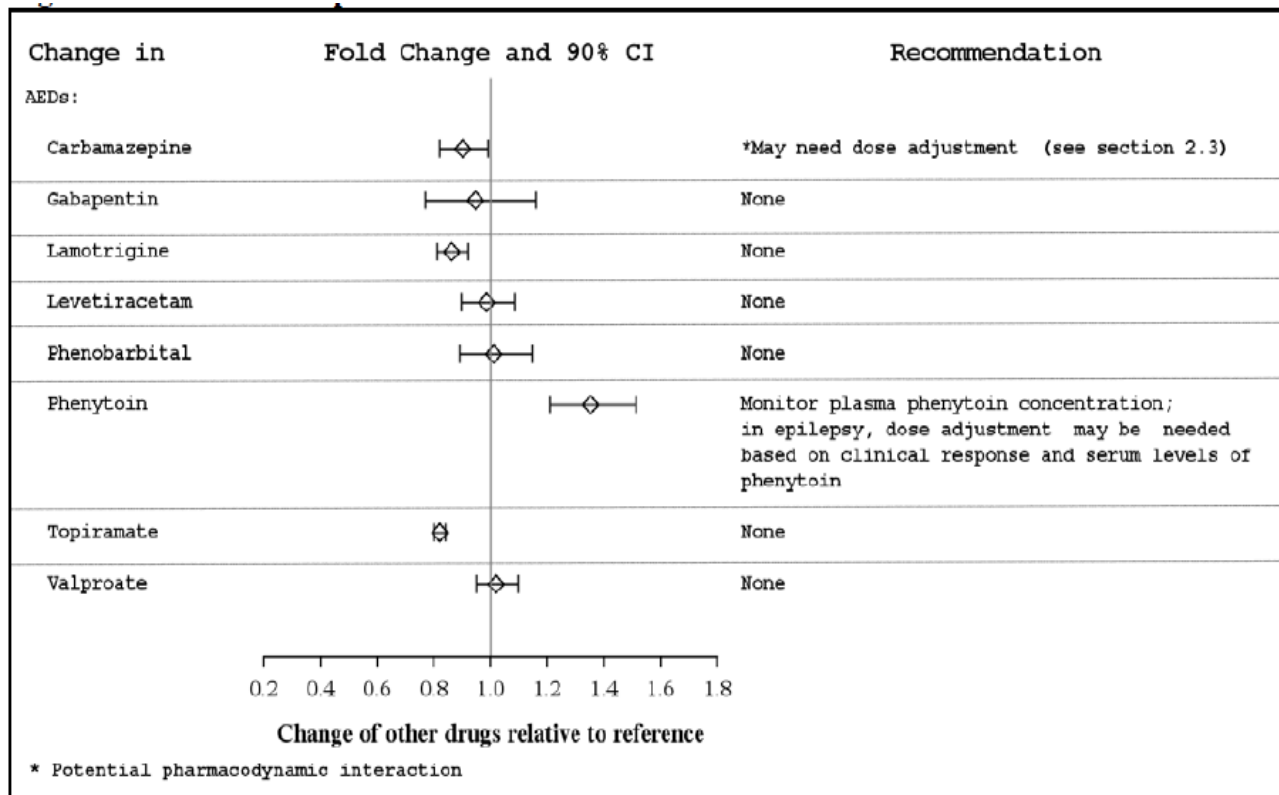
**Figure 2: Potential Impact of Other AEDs on AUC of Eslicarbazepine**



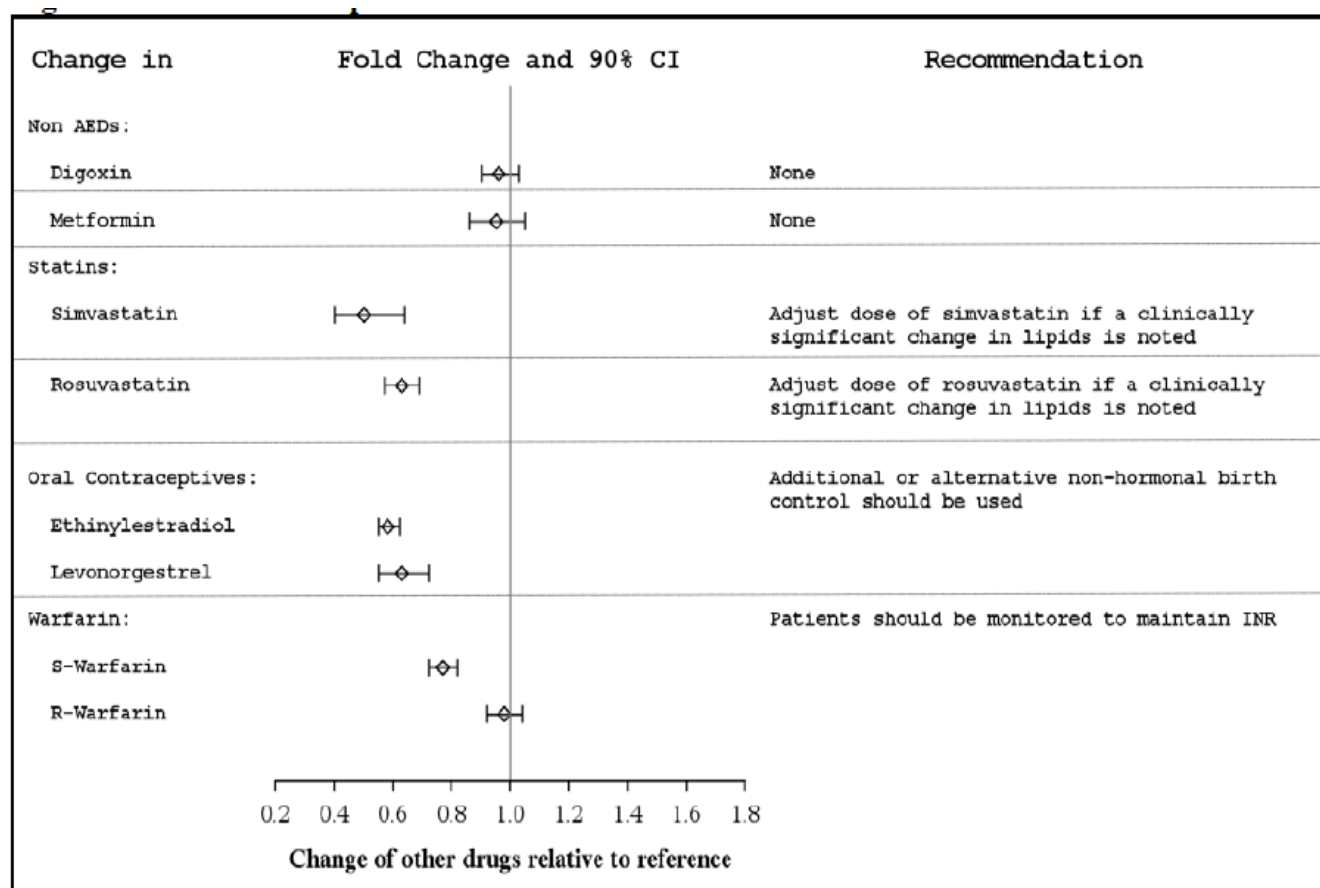
#### Potential for Eslicarbazepine Acetate to Affect Other Drugs

The potential impact of eslicarbazepine acetate on the systemic exposure (AUC) of other drugs (including AEDs) is shown in Figures 3a and 3b:

**Figure 3a: Potential Impact of Eslicarbazepine Acetate on the AUC of AEDs**



**Figure 3b: Potential Impact of Eslicarbazepine Acetate on the AUC of Non-AEDs**



## 13 NONCLINICAL TOXICOLOGY

### 13.1 Carcinogenesis, Mutagenesis, Impairment of Fertility

#### Carcinogenesis

In a two-year carcinogenicity study in mice, eslicarbazepine acetate was administered orally at doses of 100, 250, and 600 mg/kg/day. An increase in the incidence of hepatocellular adenomas and carcinomas was observed at 250 and 600 mg/kg/day in males and at 600 mg/kg/day in females. The dose not associated with an increase in tumors (100 mg/kg/day) is less than the MRHD (1,600 mg/day for monotherapy) on a mg/m<sup>2</sup> basis.

#### Mutagenesis

Eslicarbazepine acetate and eslicarbazepine were not mutagenic in the *in vitro* Ames assay. In *in vitro* assays in mammalian cells, eslicarbazepine acetate and eslicarbazepine were not clastogenic in human peripheral blood lymphocytes; however, eslicarbazepine acetate was clastogenic in Chinese hamster ovary (CHO) cells, with and without metabolic activation. Eslicarbazepine acetate was positive in the *in vitro* mouse lymphoma *tk* assay in the absence of metabolic activation. Eslicarbazepine acetate was not clastogenic in the *in vivo* mouse micronucleus assay.

#### Impairment of Fertility

When eslicarbazepine acetate (150, 350, and 650 mg/kg/day) was orally administered to male and female mice prior to and throughout the mating period, and continuing in females to gestation day 6, there was an increase in embryoletality at all doses. The lowest dose tested is less than the MRHD on a mg/m<sup>2</sup> basis.

When eslicarbazepine acetate (65, 125, 250 mg/kg/day) was orally administered to male and female rats prior to and throughout the mating period, and continuing in females to implantation, lengthening of the estrus cycle was observed at the highest dose tested. The data in rats are of uncertain relevance to humans because of differences in metabolic profile between species.

## 14 CLINICAL STUDIES

### 14.1 Monotherapy for Partial-Onset Seizures

The effectiveness of eslicarbazepine acetate as monotherapy for partial-onset seizures was established in two identical, dose- blinded historical control trials in a total of 365 patients with epilepsy (Study 1 and Study 2). In these trials, patients were randomized in a 2:1 ratio to receive either eslicarbazepine acetate tablets 1,600 mg or 1,200 mg once daily, and their responses were compared to those of a historical control group. The historical control methodology is described in a publication by French et al. [*see References (15)*]. The historical control consisted of a pooled analysis of the control groups from 8 trials of similar design, which utilized a subtherapeutic dose of an AED as a comparator. Statistical superiority to the historical control was considered to be demonstrated if the upper limit from a 2-sided 95 % confidence interval for the percentage of patients meeting exit criteria in patients receiving eslicarbazepine acetate tablets remained below the lower 95 % prediction interval of 65 % derived from the historical control data.

In Study 1 and Study 2, patients  $\geq 16$  years of age experienced at least 4 seizures during the baseline period with no 28-day seizure free period while receiving 1 or 2 AEDs (both could not be sodium-channel blocking drugs, and at least one AED was limited to 2/3 of a typical dose). Eslicarbazepine acetate was titrated over a 1- to 2-week period followed by the gradual withdrawal of the background AED over a 6-week period, followed by a 10-week monotherapy period.

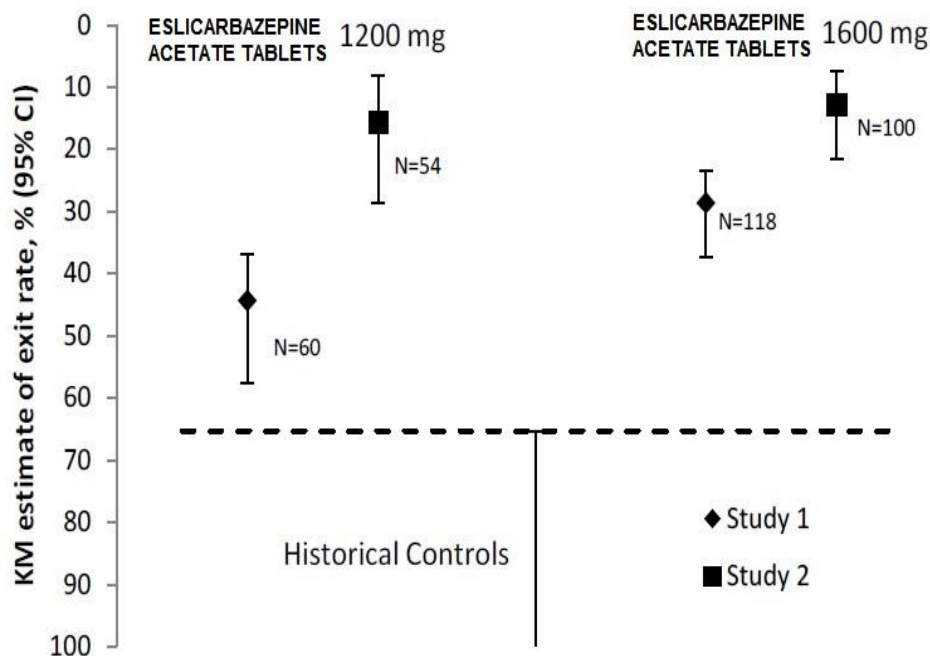
The exit criteria were one or more of the following: (1) an episode of status epilepticus, (2) emergence of a generalized tonic-clonic seizure in patients who had not had one in the past 6 months, (3) doubling of average monthly seizure count during any 28 consecutive days, (4) doubling of highest consecutive 2-day seizure frequency during the entire treatment phase, or (5) worsening of seizure severity considered by the investigator to require intervention. The primary endpoint was the cumulative 112-day exit rate in the efficacy population. Additionally, in Studies 1 and 2, if the discontinuation rate exceeded 10 %, patients were randomly reassigned to be counted as exits.

The most commonly used baseline AEDs were carbamazepine, levetiracetam, valproic acid, and lamotrigine.

In Study 1, the Kaplan-Meier (K-M) estimate of the percentage of patients meeting at least 1 exit criterion was 29 % (95 % CI: 21 %, 38 %) in the 1,600 mg group and 44 % (95 % CI 33 %, 58 %) in the 1,200 mg group. In Study 2, the K-M estimate of the percentage of patients meeting at least 1 exit criterion was 13 % (95 % CI: 8 %, 22 %) in the 1,600 mg group and 16 % (95 % CI: 8 %, 29 %) in the 1,200 mg group. The upper limit of the 2-sided 95 % CI of both doses in both trials were below the threshold of 65 % derived from the historical control data, meeting the pre-specified criteria for efficacy (see Figure 4).

**Figure 4: Kaplan-Meier Estimates of Cumulative 112-Day Exit Rates for Studies 1 and 2**





## 14.2 Adjunctive Therapy for Partial-Onset Seizures

The efficacy of eslicarbazepine acetate as adjunctive therapy in partial-onset seizures was established in three randomized, double-blind, placebo-controlled, multicenter trials in adult patients with epilepsy (Study 3, Study 4, and Study 5). Patients enrolled had partial-onset seizures with or without secondary generalization and were not adequately controlled with 1 to 3 concomitant AEDs. During an 8-week baseline period, patients were required to have an average of  $\geq 4$  partial-onset seizures per 28 days with no seizure-free period exceeding 21 days. In these three trials, patients had a median duration of epilepsy of 19 years and a median baseline seizure frequency of 8 seizures per 28 days. Two-thirds (69 %) of subjects used 2 concomitant AEDs and 28 % used 1 concomitant AED. The most commonly used AEDs were carbamazepine (50 %), lamotrigine (24 %), valproic acid (21 %), and levetiracetam (18 %). Oxcarbazepine was not allowed as a concomitant AED.

Studies 3 and 4 compared dosages of eslicarbazepine acetate tablets 400 mg, 800 mg and 1,200 mg once daily with placebo. Study 5 compared dosages of eslicarbazepine acetate tablets 800 mg and 1,200 mg once daily with placebo. In all three trials, following an 8-week Baseline Phase, which established a baseline seizure frequency, subjects were randomized to a treatment arm. Patients entered a treatment period consisting of an initial titration phase (2 weeks), and a subsequent maintenance phase (12 weeks). The specific titration schedule differed amongst the three studies. Thus, patients were started on a daily dose of 400 mg or 800 mg and subsequently increased by 400 mg/day following one or two weeks, until the final daily target dose was achieved.

The standardized seizure frequency during the Maintenance Phase over 28 days was the primary efficacy endpoint in all three trials. Table 5 presents the results for the primary endpoint, as well as the secondary endpoint of percent reduction from baseline in seizure frequency. The eslicarbazepine acetate tablets treatment at 400 mg/day was studied in Studies 3 and 4 and did not show significant treatment effect. A statistically significant effect was observed with eslicarbazepine acetate tablets treatment at doses of 800 mg/day in Studies 3 and 4, but not in Study 5, and at doses of 1,200 mg/day in all 3 studies.

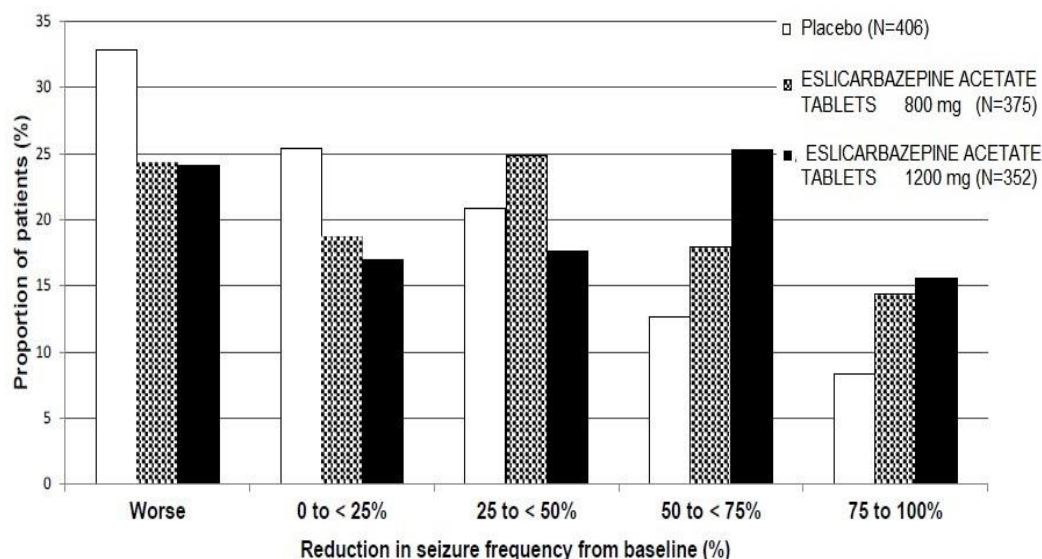
**Table 5: Standardized Seizure Frequency During the Maintenance Phase Over 28 Days and Percent Reduction from Baseline in Seizure Frequency**

	Placebo	Eslicarbazepine Acetate Tablets	
		800 mg	1,200 mg
Study 3			
N	95	88	87
Seizure Frequency (LS Mean seizures per 28 days) (p-value)	6.6	5 (0.047*)	4.3 (0.001*)
Median Percent Reduction from Baseline in Seizure Frequency (%)	-15	-36	-39
Study 4			
N	99	87	81
Seizure Frequency (LS Mean seizures per 28 days) (p-value)	8.6	6.2 (0.006*)	6.6 (0.042*)
Median Percent Reduction from Baseline in Seizure Frequency (%)	-6	-33	-28
Study 5			
N	212	200	184
Seizure Frequency (LS Mean seizures per 28 days) (p-value)	7.9	6.5 (0.058)	6 (0.004*)
Median Percent Reduction from Baseline in Seizure Frequency (%)	-22	-30	-36

\*statistically significant compared to placebo

Figure 5 shows changes from baseline in the 28-day total partial seizure frequency by category of reduction in seizure frequency from baseline for patients treated with eslicarbazepine acetate and placebo in an integrated analysis across the three clinical trials. Patients in whom the seizure frequency increased are shown to the left as “Worse.” Patients in whom the seizure frequency decreased are shown in four categories.

**Figure 5: Proportion of Patients by Category of Seizure Reduction for Eslicarbazepine Acetate and Placebo Across All Three Double-blind Trials**



## 15 REFERENCES

French JA, Wang S, Warnock B, Temkin N. *Historical control monotherapy design in the treatment of epilepsy*. *Epilepsia* 2010;51(10):1936-43.

## 16 HOW SUPPLIED/STORAGE AND HANDLING

### 16.1 How Supplied

Eslicarbazepine acetate tablets are supplied in the following strengths and package configurations:

200 mg tablets: White to off-white, oval, biconvex tablet with functional scoring, engraved “E” score “S” on one side, “APO” on the other side

Bottles of 30s NDC: 60505-4658-3

Bottles of 90s NDC: 60505-4658-9

400 mg: White to off white, round, biconvex tablet. Engraved “ESL” over “400” on one side, “APO” on the other side.

Bottles of 30s NDC: 60505-4659-3

Bottles of 90s NDC: 60505-4659-9

600 mg: White to off-white, capsule shape, biconvex tablet with functional scoring, engraved “ESL” score “600” on one side, “APO” on the other side.

Bottles of 60s NDC: 60505-4660-6

Bottles of 90 NDC: 60505-4660-9

800 mg: White to off-white, capsule shape, biconvex tablet with functional scoring, engraved “ESL” score “800” on one side, “APO” on the other side.

Bottle of 30s NDC: 60505-4661 -3

Bottle of 90s NDC: 60505-4661 -9

### 16.2 Storage and Handling

Store eslicarbazepine acetate tablets at 20°C to 25°C (68°F to 77°F); excursions permitted from 15°C to 30°C (59°F to 86°F) [see *USP Controlled Room Temperature*].

## 17 PATIENT COUNSELING INFORMATION

See FDA-approved patient labeling (Medication Guide).

Inform patients and caregivers of the availability of a Medication Guide, and instruct them to read the Medication Guide prior to taking eslicarbazepine acetate tablets. Instruct patients and caregivers that eslicarbazepine acetate tablets should only be taken as prescribed.

### Suicidal Behavior and Ideation

Counsel patients, their caregivers, and families that AEDs, including eslicarbazepine acetate tablets, may increase the risk of suicidal thoughts and behavior and advise them of the need to be alert for the emergence or worsening of symptoms of depression, any unusual changes in mood or behavior, or the emergence of suicidal thoughts, behavior, or thoughts about self-harm. Instruct patients, caregivers, and families to report behaviors of concern immediately to healthcare providers [*see Warnings and Precautions (5.1)*].

### Serious Dermatologic Reactions

Advise patients and caregivers about the risk of potentially fatal serious skin reactions. Educate patients and caregivers about the signs and symptoms that may signal a serious skin reaction. Instruct patients and caregivers to consult with their healthcare provider immediately if a skin reaction occurs during treatment with eslicarbazepine acetate tablets [*see Warnings and Precautions (5.2)*].

### DRESS/Multi-organ Hypersensitivity

Instruct patients and caregivers that a fever associated with signs of other organ system involvement (e.g., rash, lymphadenopathy, hepatic dysfunction) may be drug-related and should be reported to their healthcare provider immediately [*see Warnings and Precautions (5.3)*].

### Anaphylactic Reactions and Angioedema

Advise patients and caregivers of life threatening symptoms suggesting anaphylaxis or angioedema (swelling of the face, eyes, lips, tongue, or difficulty in swallowing or breathing) that can occur with eslicarbazepine acetate tablets. Instruct them to immediately report these symptoms to their healthcare provider [*see Warnings and Precautions (5.4)*].

### Hyponatremia

Advise patients and caregivers that eslicarbazepine acetate may reduce serum sodium concentrations, especially if they are taking other medications that can lower sodium. Advise patients and caregivers to report symptoms of low sodium such as nausea, tiredness, lack of energy, irritability, confusion, muscle weakness/spasms, or more frequent or more severe seizures [*see Warnings and Precautions (5.5)*].

### Neurological Adverse Reactions

Counsel patients and caregivers that eslicarbazepine acetate tablets may cause dizziness, gait disturbance, somnolence/fatigue, cognitive dysfunction, and visual changes. These adverse reactions, if observed, are more likely to occur during the titration period compared to the maintenance period. Advise patients not to drive or operate machinery until they have gained sufficient experience on eslicarbazepine acetate tablets to gauge whether it adversely affects their ability to drive or operate machinery [*see Warnings and Precautions (5.6)*].

### Withdrawal of eslicarbazepine acetate tablets

Advise patients and caregivers not to discontinue use of eslicarbazepine acetate tablets without consulting with their healthcare provider. Eslicarbazepine acetate tablets should be gradually withdrawn to minimize the potential of increased seizure frequency and status epilepticus [*see Warnings and Precautions (5.7)*].

### Hematologic Adverse Reactions

Advise patients and caregivers that there have been rare reports of blood disorders reported in patients treated with eslicarbazepine acetate tablets. Instruct patients to immediately consult with their physician if they experience symptoms suggestive of blood disorders [*see Warnings and Precautions (5.10)*].

### Interaction with Oral Contraceptives

Inform patients and caregivers that eslicarbazepine acetate tablets can significantly decrease the effectiveness of hormonal contraceptives. Recommend that female patients of childbearing potential use additional or alternative non- hormonal forms of contraception during treatment with eslicarbazepine acetate tablets and after treatment has been discontinued for at least one menstrual cycle or until otherwise instructed by their healthcare provider [*see Drug Interactions (7.3, 7.4)*].

### Pregnancy Registry

Encourage patients to enroll in the North American Antiepileptic Drug Pregnancy Registry if they become pregnant. This Registry is collecting information about the safety of AEDs during pregnancy. To enroll, patients can call 1-888-233-2334 (toll-free) [*see Use in Specific Populations (8.1)*].

## **APOTEX INC**

### **ESLICARBAZEPINE ACETATE TABLETS**

**200 mg, 400 mg, 600 mg and 800 mg**

#### **Manufactured by**

Apotex Inc.  
Toronto, Ontario  
Canada M9L 1T9

#### **Manufactured for**

Apotex Corp.  
Weston, Florida,  
USA 33326

Revision: 3